

**CAST IRON  
REPAIR**

# In Stitches

**ON-SITE MACHINING  
SOLUTIONS**

Web: [www.castironrepair.com](http://www.castironrepair.com)  
[info@metallocking.com](mailto:info@metallocking.com)

Metal Locking Service Quarterly Newsletter  
Fall 2004 edition

PH: (866) FIX-IRON



**INCREASED CAPABILITIES-** Metal Locking Service has just been qualified to provide its seventh type of repair to General Electric's locomotive frames. We now sleeve and machine the cam bores; both in the shop and in the field.

## Latest Addition

Metal Locking Service is proud to announce the addition of another Project Manager to our office staff. Tushar Bhanse is a recent graduate of the State University of New York at Buffalo, with a Masters degree in Mechanical Engineering. His experience and education will be a welcome addition to our front office.

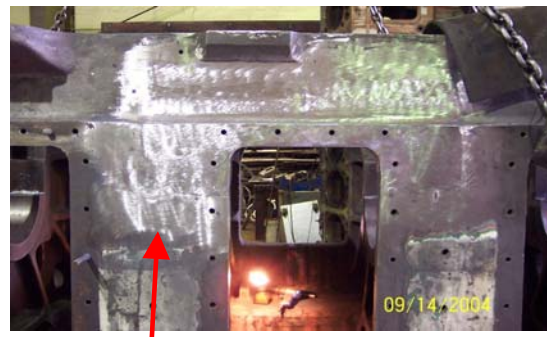
**ON THE ROAD** – Our unique services require us to travel far and wide to provide repairs. Our experience makes it possible for us to plan for a repair from over 1000s of miles away, and our quick response enables us to mobilize within 24 hours. So when a utility company called from St. Kitts, in the Caribbean, we knew we could handle the job. We provided an in-situ shaft repair on-site.

## Repair to Dresser Rand Frame



**Broken out window on a large  
compressor frame**

A previous repair by a competitor failed - We machined a new pocket and metal locked a replacement piece.



**Repaired window machined and  
pressure tight**

**NO JOB TOO BIG!** Metal Locking Service recently acquired a 45,000 sq. ft. facility to meet our ever-growing demand. All metal locking will be done at this location, freeing up some space in our current shop for more machining.

**NOTEWORTHY:** Metal Locking Service can now be reached toll free, 24 hours a day. Call 866-FIX-IRON (866-349-4766) with your cast iron repair or industrial maintenance needs.