

**CAST IRON
REPAIR**

In Stitches

"FIRST AID FOR METAL"

**ON-SITE MACHINING
SOLUTIONS**

www.castironrepair.com
info@castironrepair.com

Metal Locking Service Quarterly Newsletter
Winter 2006-2007 Edition

PH: (866) FIX-IRON

Out of this World - The Laboratory for Laser Energetics (LLE) at the University of Rochester operates the largest laser bombardment chambers in the world. Large scale laser research including atomic fusion is being performed inside. Currently, they are installing new laser fixtures which require an opening of a 24" flange to a 24½" flange in a class 1000 clean room. MLS custom designed and fabricated a sealed vacuum chamber for our portable line boring system. The sealed unit prevents chips &/or debris from entering the chamber and clean room. Three bores on two separate chambers were completed during a recent holiday shutdown.



On-site machining of 2 EP & 1 Omega Flange



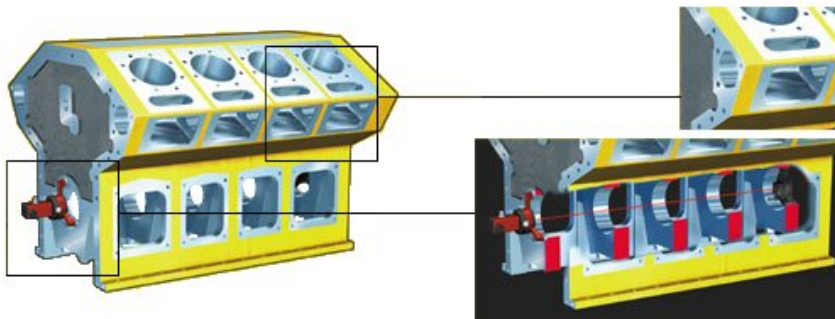
MLS Crew arriving

The Road Less Traveled —

When we say world-wide service, we mean it. We recently had a two man crew working 1 hour offshore of Luanda, Angola (Africa). A piston failure resulted in a broken block on this Waukesha (see picture on right). We attached a replacement piece via metal locking and then machined on-site to finish. A water tight repair was necessary and achieved.



Repair of Waukesha



Our laser alignment and measurement systems are simple to use and adapt for each measuring task. Common applications such as: Straightness, Flatness, Squareness, Parallelism, Spindle Direction, Shaft Alignment, Sheave/Pully Alignment, Bore Center

Visit http://www.castironrepair.com/laser_alignment_measurement.php for complete details