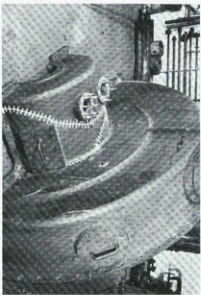


Before - Section Iron Cover from Disintegrator from steel mill.



After - Metal locked and sealed - no post repair machining required.



Before - Crown from Single Crank Toggle Draw Press - bearing boss broken away.



After - Crown now with both bosses repaired - alignment regained.

**We offer you PERMANENT casting repairs with lasting dependability.**



**Service throughout  
the world is as close  
as your telephone.**

**716/824-4359**



Back in alignment and permanently repaired with Metalock cold process of repair.

Roll Mill housing from steel mill before repair.

# GIVE US A

# BREAK





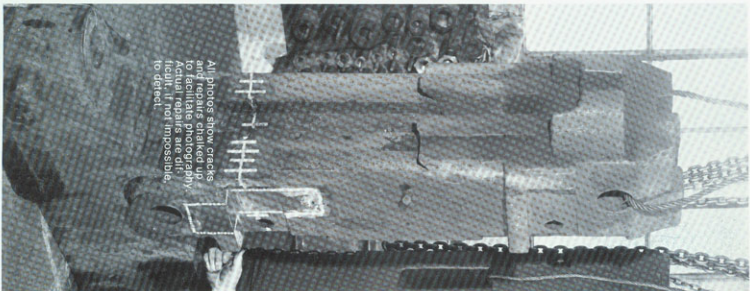
Blower Casting from Calajitlic Cracker, damaged by explosion, causing complete shut-down of plant. Returned in 96 hours after repair by Metal Locking process.



Metal Locking is a cold, mechanical method of efficient permanent equipment repair, with minimal down time.

Cold mechanical repair is preferred, since it does not require post-repair machining. Critical alignment and strength can be maintained. Repairs with heat may cause warpage and introduce stresses.

Specialty trained personnel perform the work, on a quoted basis, in our shop or on location. With over 30 years experience, we are recommended by machine manufacturers, and our work is accepted and endorsed by insurance underwriters.



All photos show cracks and repairs chalked up to facilitate photography. Actual repairs are difficult, if not impossible, to detect.

"FIRST AID FOR METAL"



88 HAYES PLACE, BUFFALO, NEW YORK 14210  
TELEPHONE 716/824-4359